

## Features

### Compact pressure unit

with display of excellent luminosity, analogue output and switch function

- **Pressure sensor element**  
on piezoresistive basis with flush diaphragm
- **Analogue output: 4...20 mA or 0...10 DCV**  
for purpose of control and recording
- **High operating reliability**  
designed for 10 g RMS vibration and 10 million load cycles
- **Easy to operate**  
all working parameters can be adjusted when the pressure units are installed at a process system
- **EMV-stability according to IEC 801**
- **Protection category IP 65**



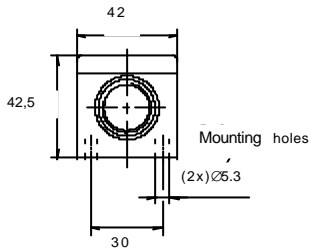
Pressure range [bar]	(-1) - 1	(-0,1)- 0	0 - 0,1	0 - 0,4	0 - 1,0	0 - 6,0	0 - 10
Supply voltage	16 - 32 VDC inclusive permissible ripple of 30 %						
No load current	≤ 50 mA						
Switch output	PNP, N.O./N.C., short circuit protection and protected against reverse polarity						
• Range of adjustment	4 .. 100 % of FS						
• Output current	≤ 250 mA						
• Voltage drop	≤ 2,5 V						
• Switching time	typ. 50 ms						
• Temperature drift	typ. 0,15 % of FS/10 K						
• Switching-hysteresis *)	2 % of FS						
Relay output (option **)	Two-way -contact, galvanically isolated						
• Output current	≤ 1A						
• Contact rating/voltage	≤ 30 W/≤ 40 V						
Digital-Display	3 x 7-segments-LED-display, resolution ≤ 0,4 % of FS						
Switching indication	red LED						
Analogue output	4 - 20 mA or 0 - 10 VDC (≤ 5 mA), resp. time ≤ 4 ms, short circuit protection,						
• Linearity	± 1,0 % of FS						
• Reproducibility	± 0,2 % of FS						
Permitted ambient temperature	- 10 °C ... 70 °C						
Pressure connection	G 1/8"						
Material of body/pressure cell	1.4305/1.4571 or FPM (Viton)						
Material of housing	Makralon 8030						
Electrical connection	Plug DIN 43 650 A or PG 9 - cable connection or M12-connector						

\*) Pressure switches with adjustable hysteresis, 2 % of FS are the smallest available hysteresis

\*\*\*) Relay-option only with PG 9 - cable connection

FS ≙ Rated Pressure

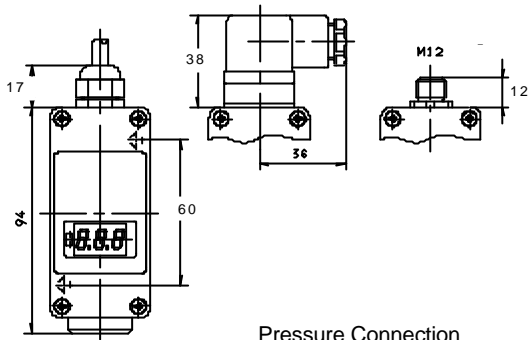
## Dimensions in mm



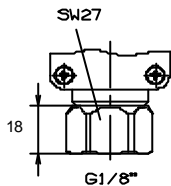
**PG9-cable connector**

**Plug DIN 43 650 A**

**M12 connector**

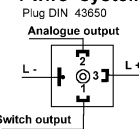


**Pressure Connection**

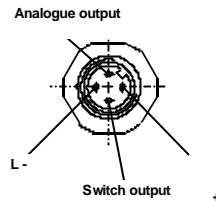


## Electrical connections

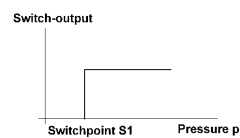
### 4 wire system



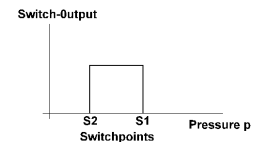
### M12 connector



## Adjustable operating modes:



Operating mode 1



Operating mode 2

<b>Pressure Range</b>												
• (-1) – 0 bar		0	M	1								
• (0,1) - 0 bar		M	0	1								
• 0 – 0,1 bar		0	K	1								
• 0 – 0,4 bar		0	K	4								
• 0 – 1,0 bar		0	0	1								
• 0 – 6,0 bar		0	0	6								
• 0 – 10,0 bar		0	1	0								
<b>Analogue Output</b>												
• 0 - 10 VDC							G					
• 4 - 20 mA							S					
• 0 - 20 mA							O					
<b>Pressure Connection</b>												
• G 1/2 "								1				
• G 1/8 "								8				
<b>Electrical Connection</b>												
• DIN 43650 4 wire plug									2			
• PG 9 - cable connection									3			
• M12 - Connector									4			
<b>Options</b>												
• Storage of max. pressure									1			
• Relay									2			
• Adjustable Hysteresis									4			
<b>Order Specification</b>	<b>DW3</b>	x	x	x	-	R	x	x	-	S	x	x