

Features

Compact pressure unit

with display of excellent luminosity, analogue output and switch function

- **Pressure sensor element**
of stainless steel with high overload capacity
- **Analogue output: 4...20 mA or 0...10 DCV**
for purpose of control and recording
- **High operating reliability**
designed for >10 million load cycles, vibration 25 g RMS
- **Easy to operate**
all working parameters can be adjusted when the pressure units are installed at a process system
- **EMV-stability according to IEC 801**
- **Protection category IP 65**



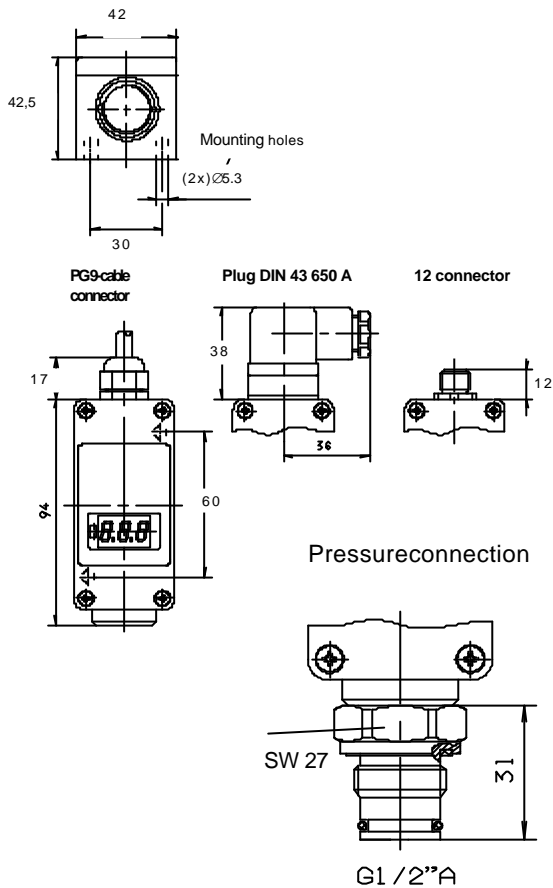
Pressure range [bar]	0 - 10	0 - 25	0 - 40	0 - 100	0 - 250	0 - 400
Supply voltage	16 - 32 VDC inclusive permissible ripple of 30 %					
No load current	≤ 50 mA					
Switch output	PNP, N.O./N.C., short circuit protection and protected against reverse polarity					
• Range of adjustment	4 .. 100 % of FS					
• Output current	≤ 250 mA					
• Voltage drop	≤ 2,5 V					
• Switching time	typ. 50 ms					
• Temperature drift	typ. 0,15 % of FS/10 K					
• Switching-hysteresis *)	2 % of FS					
Relay output (option **)	Two-way -contact, galvanically isolated					
• Output current	≤ 1A					
• Contact rating/voltage	≤ 30 W/≤ 40 V					
Digital-Display	3 x 7-segments-LED-display, resolution ≤ 0,4 % of FS					
Switching indication	red LED					
Analogue output	4 - 20 mA or 0 - 10 VDC (≤ 5 mA), resp. time ≤ 4 ms, short circuit protection,					
• Linearity	± 0,5 % of FS					
• Reproducibility	± 0,1 % of FS					
Permitted ambient temperature	- 25 °C ... 80 °C					
Pressure connection	G 1/2 with diaphragm					
Material of body/pressure cell	1.4305/1.4542					
Material of housing	Makralon 8030					
Electrical connection	Plug DIN 43 650 A or PG 9 - cable connection or M12-connector					

*) Pressure switches with adjustable hysteresis, 2 % of FS are the smallest available hysteresis

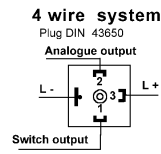
**) Relay-option only with PG 9 - cable connection

FS ≙ Rated Pressure

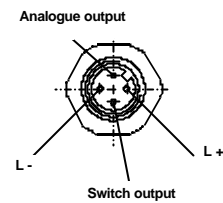
Dimensions in mm



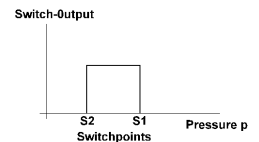
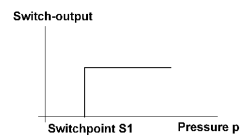
Electrical connections



M12 connector



Adjustable operating modes:



Pressure Range																				
• 0 – 10 bar			0	1	0															
• 0 – 25 bar			0	2	5															
• 0 – 40 bar			0	4	0															
• 0 – 100 bar			1	0	0															
• 0 – 250 bar			2	5	0															
• 0 – 400 bar			4	0	0															
Analogue Output																				
• 0 - 10 VDC																				
• 4 - 20 mA																				
• 0 - 20 mA																				
Pressure Connection																				
• G 1/2 " A flush mounted diaphragm																				
Electrical Connection																				
• DIN 43650 4 wire plug																				2
• PG 9 - cable connection																				3
• M12 - Connector																				4
Options																				
• Storage of max. pressure																				1
• Relay																				2
• Adjustable Hysteresis																				4
Order Specification																				
	DW3	x	x	x	-	R	x	x	-	S	x									