

TW6000

Temperature Meter



Features

- Display, Binary- and Analogue-Output
- Easy to adjust by push buttons and display
- Without sealing compound



Technical Data	
Operating Voltage	16 - 32 VDC inclusive permissible ripple or 30 %
No load current	typ. 60 mA
Measuring range	0 °C to 140 °C
Accuracy	± 1 % of FS
Analogue output	4 – 20 mA (Ri ≤ 500 Ω)
Switch output	PNP, N.O./N.C., short circuit protection and protected against reverse polarity
• Setting range	10°C to 130 °C
• Current rating	≤ 250 mA
• Voltage drop	≤ 2, 5 V
• Response time	< 0.3 sec in water
Indication	3 x 7- Segment-LED-Display
Set point indication	Red LED
Switching elements	3 push buttons
Medium	Liquids
Medium-Temperature	- 20°C to 130 °C
Ambient temperature	- 20 °C to 70 °C
Pressure rating	250 bar
Mechanical connection	G 1/4 A, G1/2 A
Material of sensorhead	1.4571
Material of housing	Makralon 8030
Electrical connection	M12 connector4 - wire
Protection category	IP 67
EMV -stability	IEC 801

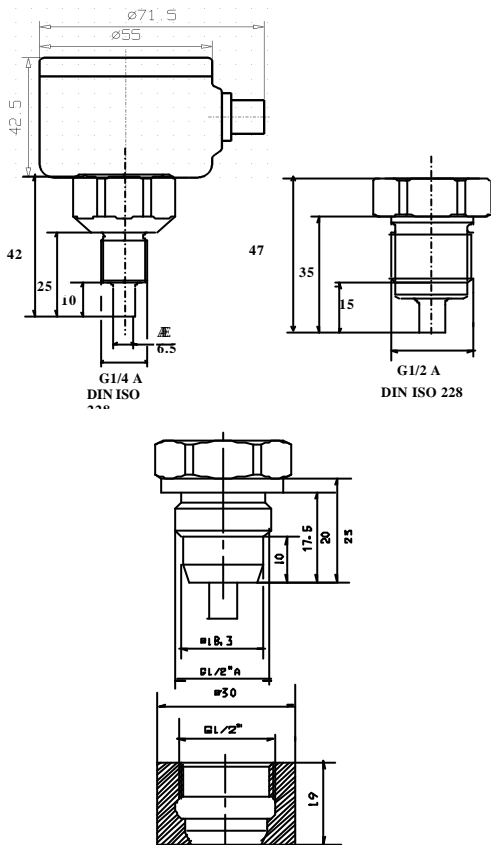
Other versions of flow moitor on request.

TW6000

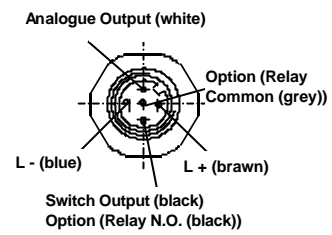
Temperature Meter



Dimensions in mm



Electrical Connection



Mechanical Connections										
• G 1/2 " A									1	
• G 1/4 " A									4	
• G 1/2 " A, CIP									5	
Option										
• Relay									2	
Order Code Key		TW600	x	-	R	x	x	-	S 4	x